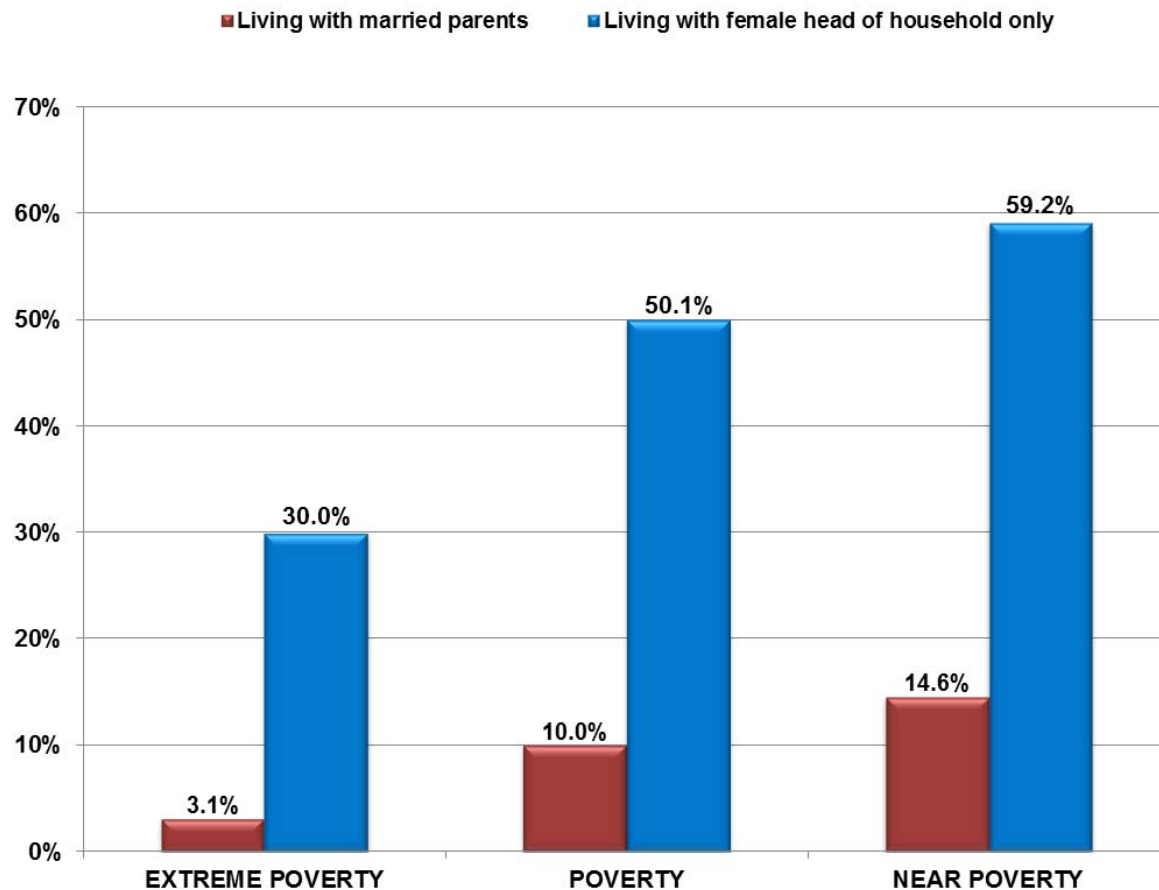


# Extreme Poverty, Poverty, and Near Poverty Rates for Children Under Age 5, by Living Arrangement: 2015



The data for Extreme Poverty, Poverty, and Near Poverty Rates for Children Under Age 5, by Living Arrangement are from table POV02 (50% of poverty, 100% of poverty, and 125% of poverty) People in Families by Family Structure, Iterated by Income-to-Poverty-Ratio, U.S. Census Bureau, *Current Population Survey, 2012 Annual Social and Economic Supplement*.

**Extreme poverty:** Below 50% of poverty  
**Poverty:** Below 100% of poverty  
**Near poverty:** Below 125% of poverty

Source: U.S. Census Bureau, *Current Population Survey, 2016 Annual Social and Economic Supplement*.

# 2016 Poverty Guidelines for the 48 Contiguous States and Washington, D.C.

Persons in family/household	Poverty guideline
1	\$11,880
2	\$16,020
3	\$20,160
4	\$24,300

Source: U.S. Department of Health and Human Services. (2016, January). *Federal Register*, 81(15), 4036–4037.

# Household Income in 20% Increments of Total: 2015

<b>Group</b>	<b>Average Household Income Ranges: 2015</b>
<b>LOWEST 20%</b>	<b>\$0–\$22,800</b>
<b>SECOND 20%</b>	<b>\$22,801–\$43,507</b>
<b>THIRD 20%</b>	<b>\$43,508–\$72,000</b>
<b>FOURTH 20%</b>	<b>\$72,001–\$117,002</b>
<b>HIGHEST 20%</b>	<b>\$117,003+</b>
<b>TOP 5% (part of highest 20%)</b>	<b>\$214,462+</b>

Source: U.S. Census Bureau, *Current Population Survey, 2016 Annual Social and Economic Supplement* (households as of March of the following year).

# Breakdown of U.S. Households, by Total Money Income: 2015

Income	# of U.S. Households (in millions)	% of All U.S. Households
Less than \$10,000	8,306	6.6%
\$10,000 to \$14,999	6,324	5.0%
\$15,000 to \$24,999	13,235	10.5%
\$25,000 to \$34,999	12,576	10.0%
\$35,000 to \$49,999	15,948	12.7%
\$50,000 to \$74,999	21,001	16.7%
\$75,000 to \$99,999	15,199	12.1%
\$100,000 to \$149,999	17,777	14.1%
\$150,000 to \$199,999	7,811	6.2%
\$200,000 or more	7,640	6.1%
<b>Total Households</b>	<b>125,819,000</b>	<b>100%</b>

**Estimated median household income: \$56,516**

Source: U.S. Census Bureau, *Current Population Survey, 2016 Annual Social and Economic Supplement*.

## Number and Percentage of Children in Poverty, by Race: 2015

	NUMBER OF CHILDREN IN POVERTY	PERCENTAGE OF CHILDREN IN POVERTY
<b>ALL RACES</b>	<b>14,509,000</b>	<b>19.7%</b>
<b>WHITE</b>	<b>4,563,000</b>	<b>12.1%</b>
<b>AFRICAN AMERICAN</b>	<b>4,146,000</b>	<b>32.9%</b>
<b>HISPANIC*</b>	<b>5,269,000</b>	<b>28.9%</b>
<b>ASIAN AMERICAN</b>	<b>466,000</b>	<b>12.3%</b>
<b>AMERICAN INDIAN AND ALASKA NATIVE**</b>	<b>233,277</b>	<b>33.8%</b>
<b>NATIVE HAWAIIAN AND OTHER PACIFIC ISLANDER**</b>	<b>36,733</b>	<b>25.9%</b>

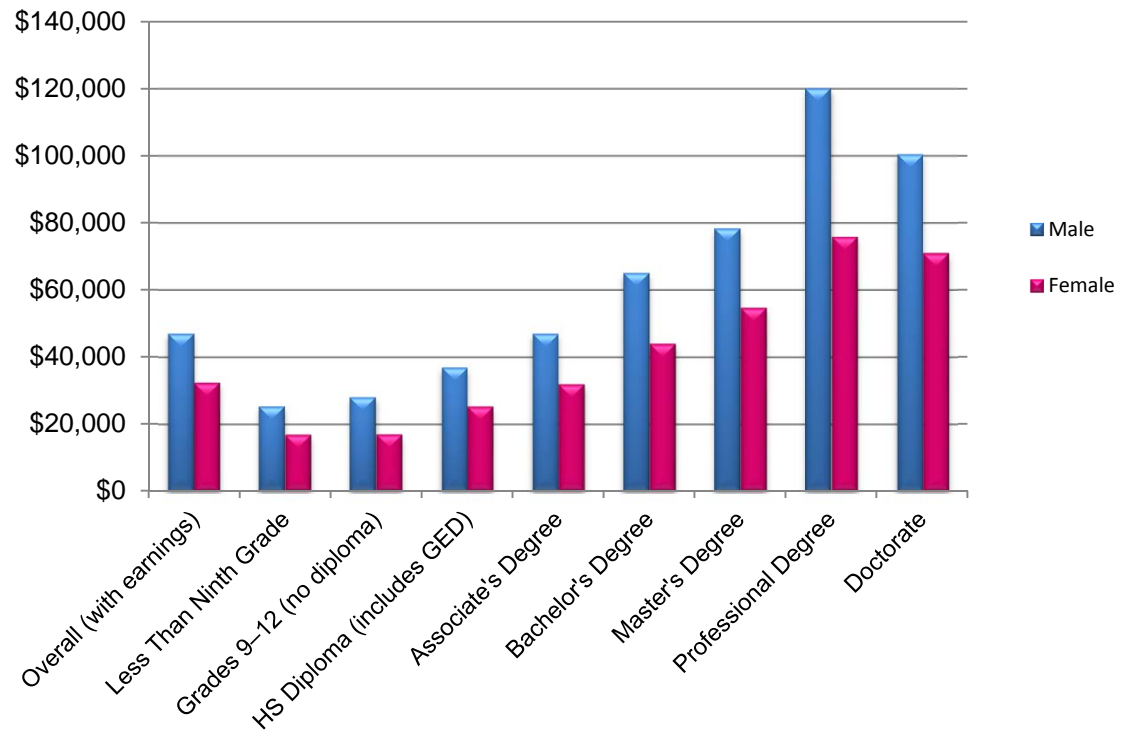
\*Hispanics may be of any race.

\*\*Data from U.S. Census Bureau. (2016, September). *2015 American Community Survey 1-Year Estimates*.

Source: U.S. Census Bureau, *Current Population Survey, 2016 Annual Social and Economic Supplement*.

# U.S. Median Income for Persons Age 25 and Older, by Sex and Educational Attainment: 2015

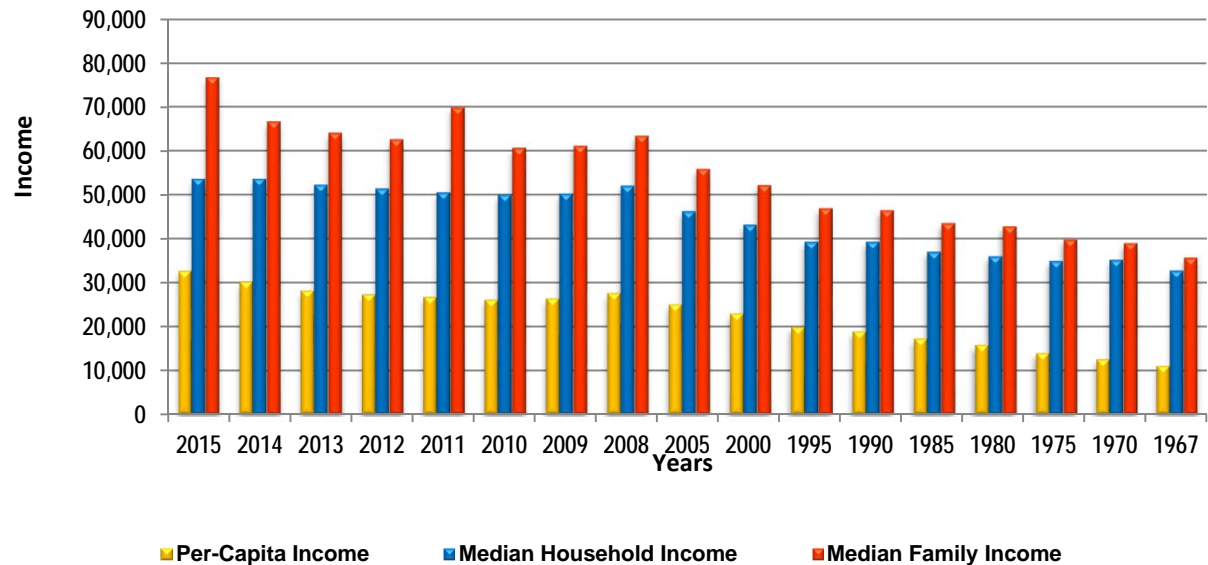
	Overall (with earnings)	Less Than Ninth Grade	Grades 9–12 (no diploma)	HS Diploma (includes GED)	Associate's Degree	Bachelor's Degree	Master's Degree	Professional Degree	Doctorate
Numbers of persons with earnings (in thousands)									
Male	75,263	2,783	4,194	20,951	7,325	17,325	7,116	1,530	1,813
Female	66,370	1,498	2,540	15,186	8,397	16,710	8,147	1,033	1,358
Median earnings, in 2015 dollars									
Male	\$47,100	\$25,411	\$28,102	\$37,003	\$47,104	\$65,190	\$78,463	\$120,247	\$100,569
Female	\$32,499	\$16,953	\$17,054	\$25,385	\$32,038	\$44,092	\$54,801	\$75,979	\$71,040



Source: U.S. Census Bureau, *Current Population Survey, 2016 Annual Social and Economic Supplement*.

# U.S. Per-Capita Income, Median Household Income, and Median Family Income: 1967 to 2015

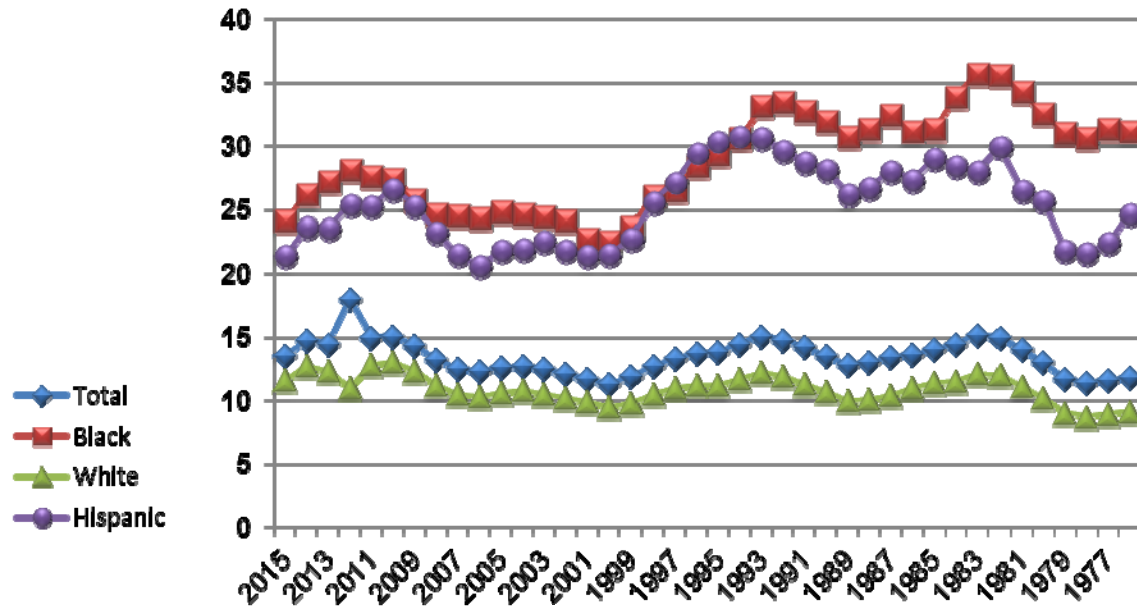
Year	Per-Capita Income	Median Household Income	Median Family Income
2015	32,653	53,657	76,697
2014	30,176	53,657	66,632
2013	28,184	52,250	64,030
2012	27,319	51,371	62,527
2011	26,708	50,502	69,821
2010	26,059	50,046	60,609
2009	26,409	50,221	61,082
2008	27,589	52,029	63,366
2005	25,035	46,242	55,832
2000	22,970	43,162	52,148
1995	19,871	39,306	46,843
1990	18,894	39,324	46,429
1985	17,280	37,059	43,518
1980	15,844	36,035	42,776
1975	13,972	34,980	39,784
1970	12,543	35,232	38,954
1967	11,067	32,783	35,629



Source: U.S. Census Bureau, *Current Population Survey, 2016 Annual Social and Economic Supplement*.

# Percentage of U.S. Persons Below Poverty Level, by Race and Ethnicity: 1976 to 2015

Year	Total	Black	White	Hispanic	Year	Total	Black	White	Hispanic
2015	13.5	24.1	11.6	21.4	1995	13.8	29.3	11.2	30.3
2014	14.8	26.2	12.7	23.6	1994	14.5	30.6	11.7	30.7
2013	14.5	27.2	12.3	23.5	1993	15.1	33.1	12.2	30.6
2012	18.0	28.1	11.0	25.4	1992	14.8	33.4	11.9	29.6
2011	15.0	27.6	12.8	25.3	1991	14.2	32.7	11.3	28.7
2010	15.1	27.4	13.0	26.6	1990	13.5	31.9	10.7	28.1
2009	14.3	25.8	12.3	25.3	1989	12.8	30.7	10.0	26.2
2008	13.2	24.7	11.2	23.2	1988	13.0	31.3	10.1	26.7
2007	12.5	24.5	10.5	21.5	1987	13.4	32.4	10.4	28.0
2006	12.3	24.3	10.3	20.6	1986	13.6	31.1	11.0	27.3
2005	12.6	24.9	10.6	21.8	1985	14.0	31.3	11.4	29.0
2004	12.7	24.7	10.8	21.9	1984	14.4	33.8	11.5	28.4
2003	12.5	24.4	10.5	22.5	1983	15.2	35.7	12.1	28.0
2002	12.1	24.1	10.2	21.8	1982	15.0	35.6	12.0	29.9
2001	11.7	22.7	9.9	21.4	1981	14.0	34.2	11.1	26.5
2000	11.3	22.5	9.5	21.5	1980	13.0	32.5	10.2	25.7
1999	11.9	23.6	9.8	22.7	1979	11.7	31.0	9.0	21.8
1998	12.7	26.1	10.5	25.6	1978	11.4	30.6	8.7	21.6
1997	13.3	26.5	11.0	27.1	1977	11.6	31.3	8.9	22.4
1996	13.7	28.4	11.2	29.4	1976	11.8	31.1	9.1	24.7



Source: U.S. Census Bureau, *Current Population Survey, 2016 Annual Social and Economic Supplement*.