

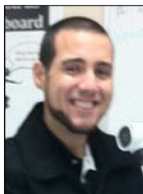
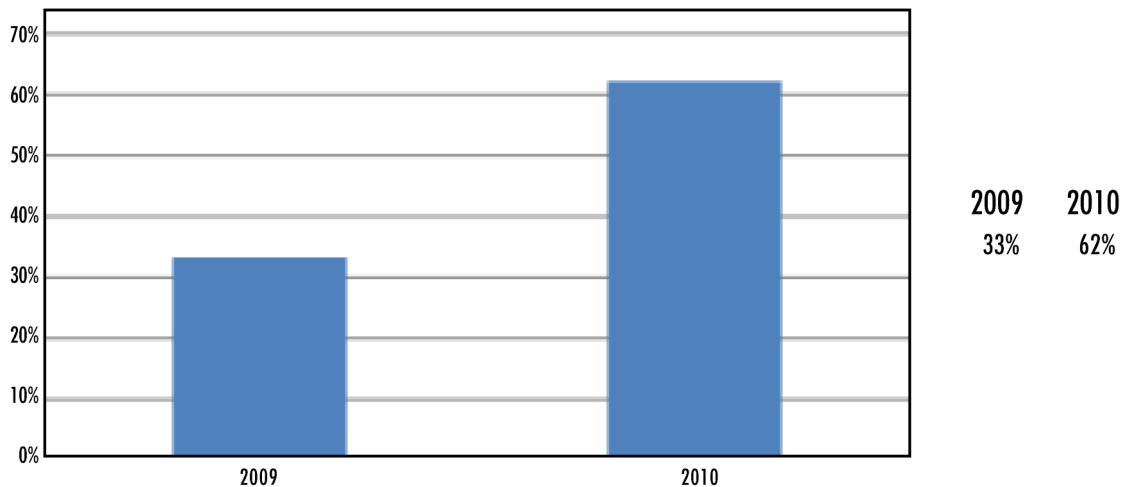
GOOSE CREEK MEMORIAL HIGH SCHOOL, BAYTOWN, TEXAS

▶▶ Relationship Building and Mental Models Improve Math Scores

Math teachers at Goose Creek Memorial High School in Baytown, Texas, have been using strategies from *A Framework for Understanding Poverty* and *Research-Based Strategies* with their students who have not passed the Exit-Level TAKS Test. Teachers focused specifically on building relationships of mutual respect with the individual students, and mental models were used to help students learn concepts they previously had been unable to master.

Using this approach, 62.2% of the students retaking the test during the October 2010 administration met the required exit-level standard. This was an increase of 28.9% over the October 2009 administration.

▶▶ % of Students Meeting Standard



Shawn Aghajan, Mathematics Teacher

It is not the knowledge base that distinguishes instruction, rather the ability to motivate students based on the strength of relationships built.